

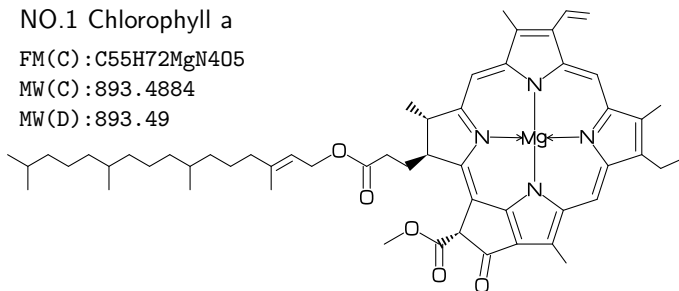
# MCF example for luamplib(Lua $\text{\LaTeX}$ )

Author : Akira Yamaji    Date : November 15, 2016  
Located at : <http://www.ctan.org/pkg/mcf2graph>

FM(C) : molecular formula calculated by mcf2graph  
MW(C) : molecular weight calculated by mcf2graph  
MW(D) : molecular weight from literature data

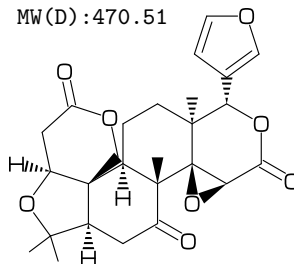
## NO.1 Chlorophyll a

FM(C) :  $\text{C}_{55}\text{H}_{72}\text{MgN}_4\text{O}_5$   
MW(C) : 893.4884  
MW(D) : 893.49



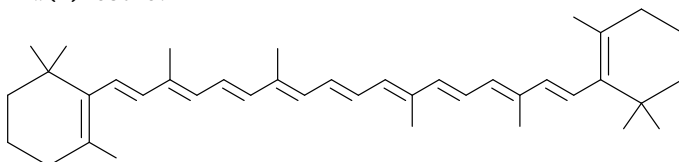
## NO.2 Limonin

FM(C) :  $\text{C}_{26}\text{H}_{30}\text{O}_8$   
MW(C) : 470.51138  
MW(D) : 470.51



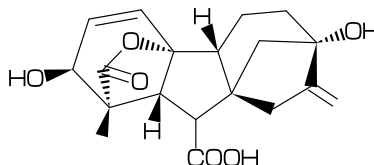
## NO.3 beta-carotene

FM(C) :  $\text{C}_{40}\text{H}_{56}$   
MW(C) : 536.8722  
MW(D) : 536.87



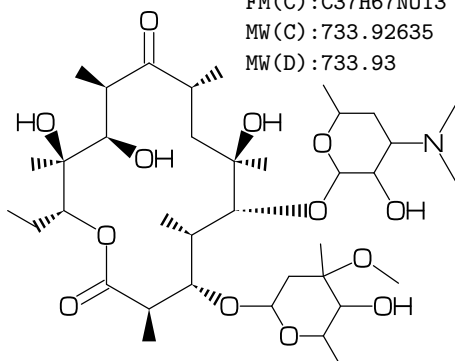
## NO.4 Gibberellin A3

FM(C) :  $\text{C}_{19}\text{H}_{22}\text{O}_6$   
MW(C) : 346.37422  
MW(D) : 346.37



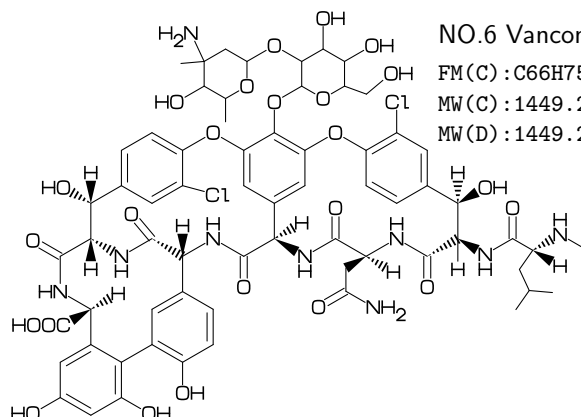
## NO.5 Erythromycin

FM(C) :  $\text{C}_{37}\text{H}_{67}\text{N}_{13}\text{O}_{13}$   
MW(C) : 733.92635  
MW(D) : 733.93



## NO.6 Vancomycin

FM(C) :  $\text{C}_{66}\text{H}_{75}\text{Cl}_2\text{N}_{12}\text{O}_{24}$   
MW(C) : 1449.25307  
MW(D) : 1449.25



## NO.7 Maitotoxin

FM(C) :  $\text{C}_{164}\text{H}_{256}\text{Na}_{20}\text{O}_{68}\text{S}_2$   
MW(C) : 3425.85455  
MW(D) : 3425.86

